

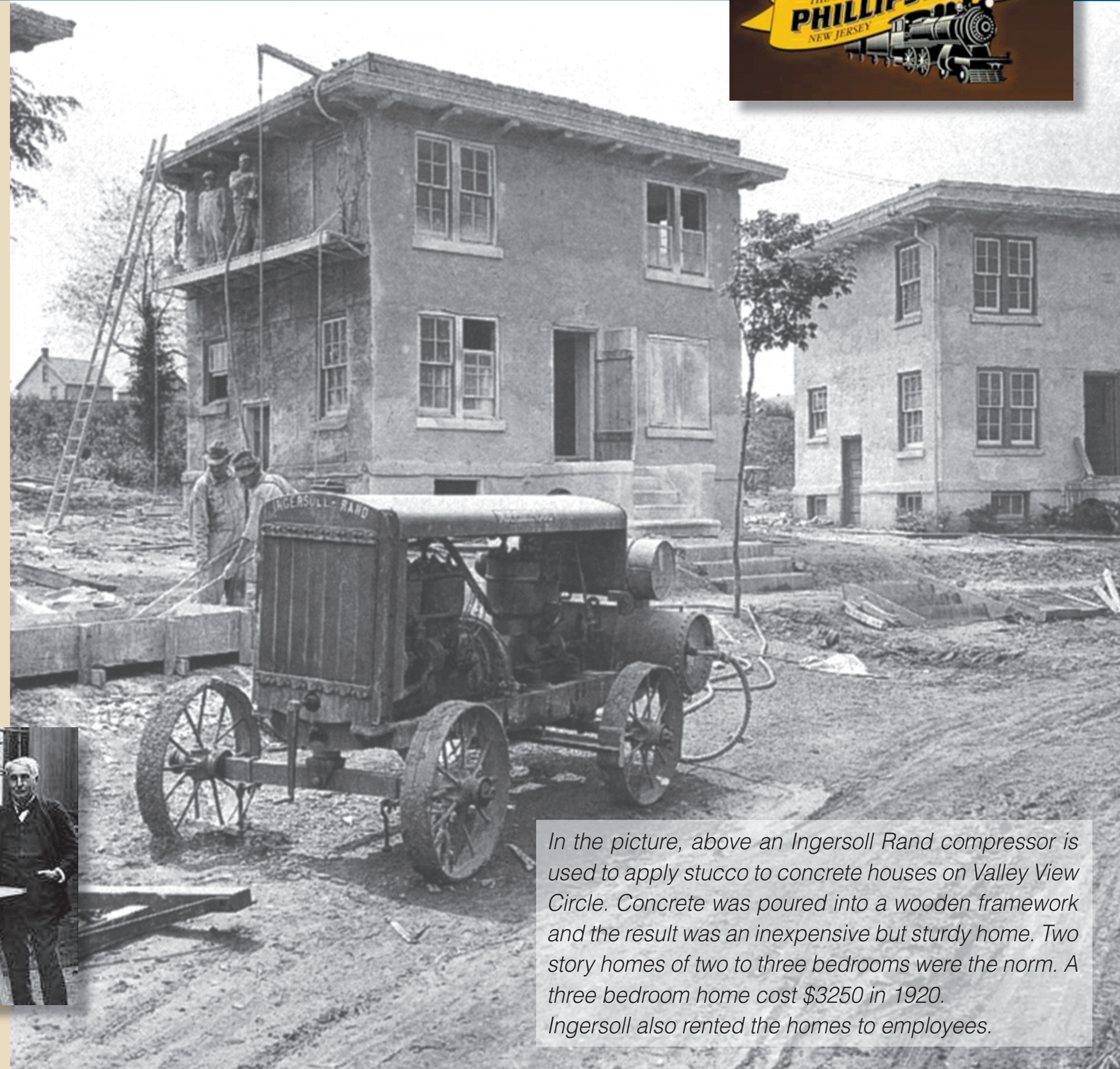
LOCK STREET PARK



INGERSOLL-RAND'S VALLEY VIEW HOUSES

At the close of World War 1, there was a housing shortage throughout the country. In 1919-1920 Ingersoll Rand Co. built low cost workers homes in the Valley View development. The first houses built on Congress St. were ordinary wooden frames and then the rest were built using concrete. The idea to use concrete was a suggestion from Thomas Edison to Ingersoll. Ingersoll contracted with Alpha Portland Cement to create the residences. The development also included a community center and a grocery store. Residents still talk about what a nice neighborhood it is to live in.

In 1908 Thomas Edison started working on a system for building low cost houses using concrete. Edison and his team perfected a formula for mixing concrete and building re-usable steel molds to cast the walls of houses. Only a few houses were constructed before Edison realized that the scheme was not as practical as he had hoped and dropped the project.



In the picture, above an Ingersoll Rand compressor is used to apply stucco to concrete houses on Valley View Circle. Concrete was poured into a wooden framework and the result was an inexpensive but sturdy home. Two story homes of two to three bedrooms were the norm. A three bedroom home cost \$3250 in 1920. Ingersoll also rented the homes to employees.